

Backup database bundle (Windows based)

Where is my CDM+ database?



CDM+ uses Openbase Database Server. Openbase stores your data in what they call Database bundles. These bundles are usually stored at the root level of your hard drive (i.e. C:\ Drive).

To find your database bundle, we need to do some preparatory work before we can backup the folder. So, lets start by opening CDM+ to the Login window.

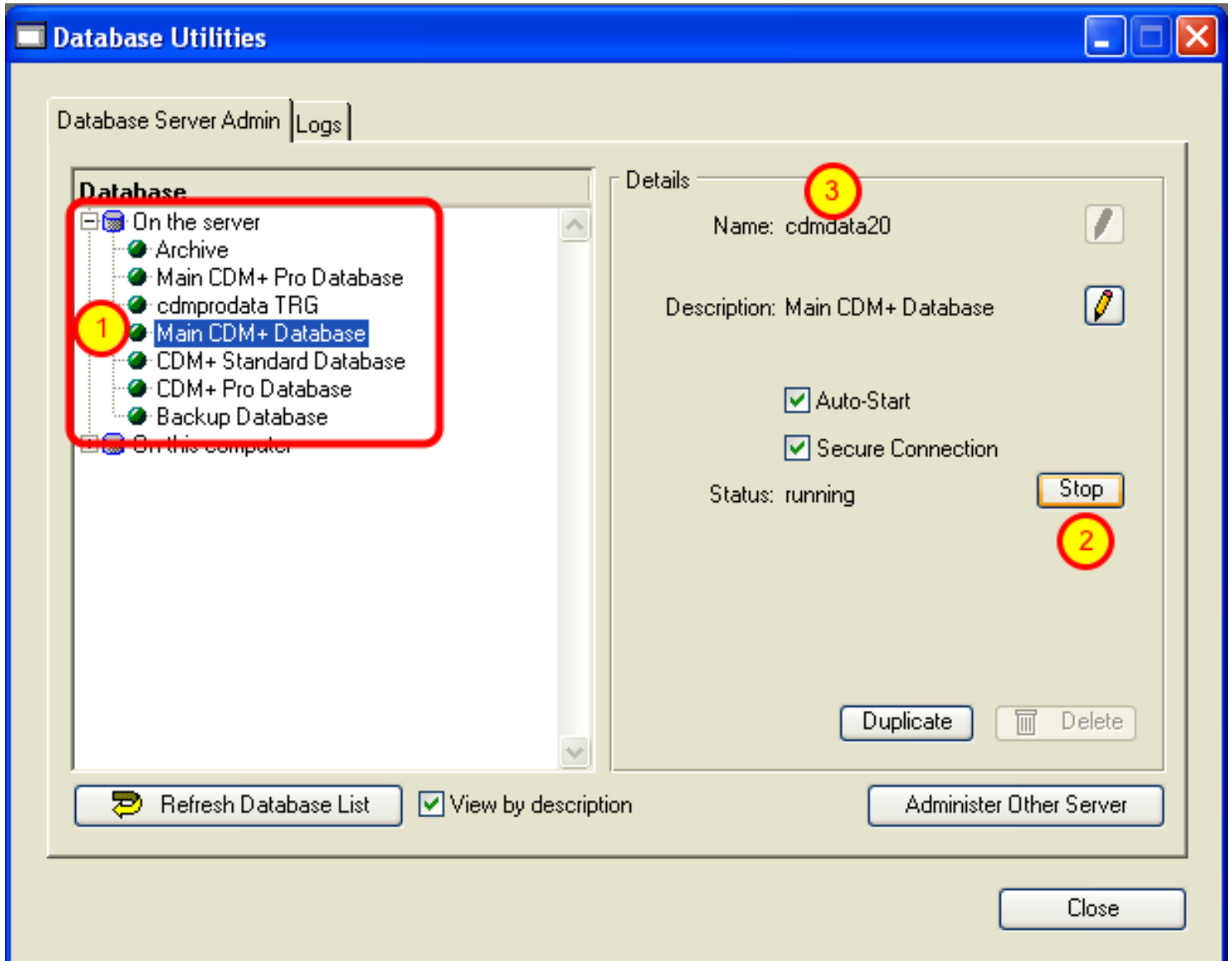
Step 1 - Open Database Utilities



With CDM+ 8.1.1, your data is housed in a running application called OpenBase so you must stop your database before you can make a copy. You perform this in the Database Utilities window.

To stop your database, go to the File menu and select Database Utilities.

Step 2 - Stop your database



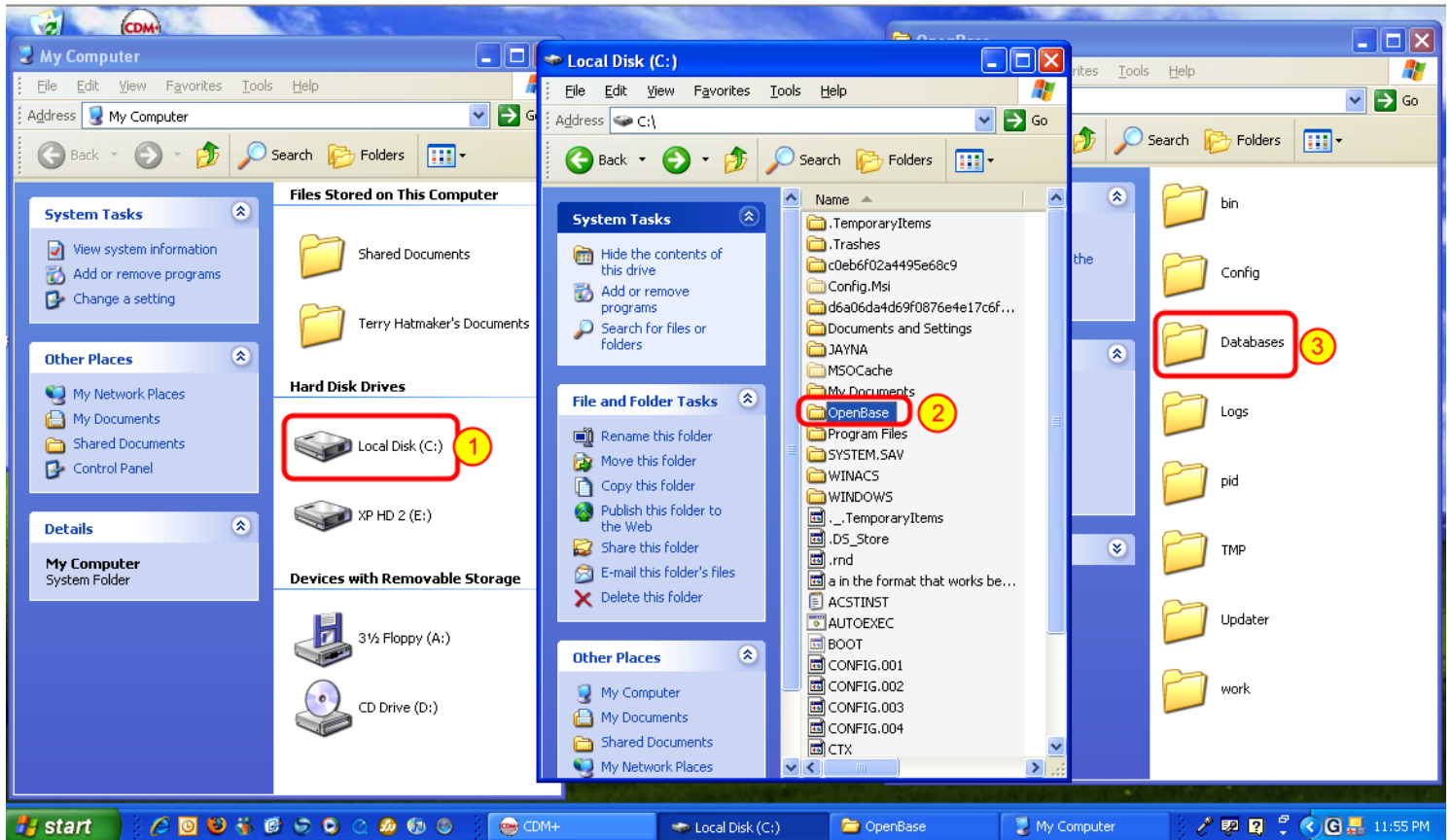
If you are working from the server, you will find your database under "On this computer." If you are on a client workstation, the database will be under "On the server."

In our example, our database is under "On the server."

1. Select the "Main CDM+ Database."
2. Look on the right side and you will see a Stop button. Click this button.

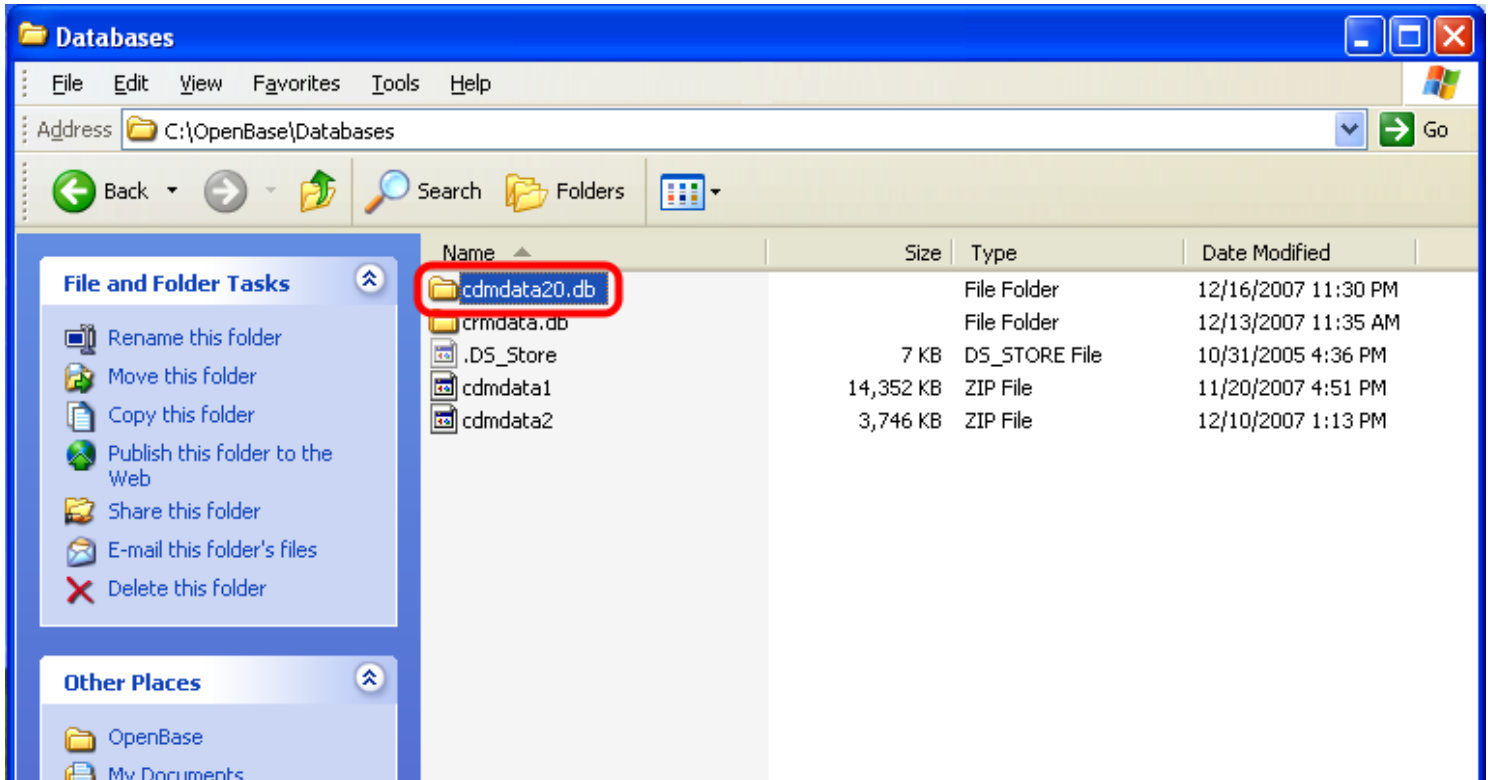
3. In order to backup your database, make a note of the "Name" of the database. The database in this example has the Name of ccmdata20.

Step 3 - Open the Databases Folder



In order to copy your database bundle, you must follow this path: c:\OpenBase\Databases. You get to the Databases folder by opening My Computer, (1) double-clicking on Local Drive (c:\), (2) double-click OpenBase folder and then (3) double-click the Databases folder.

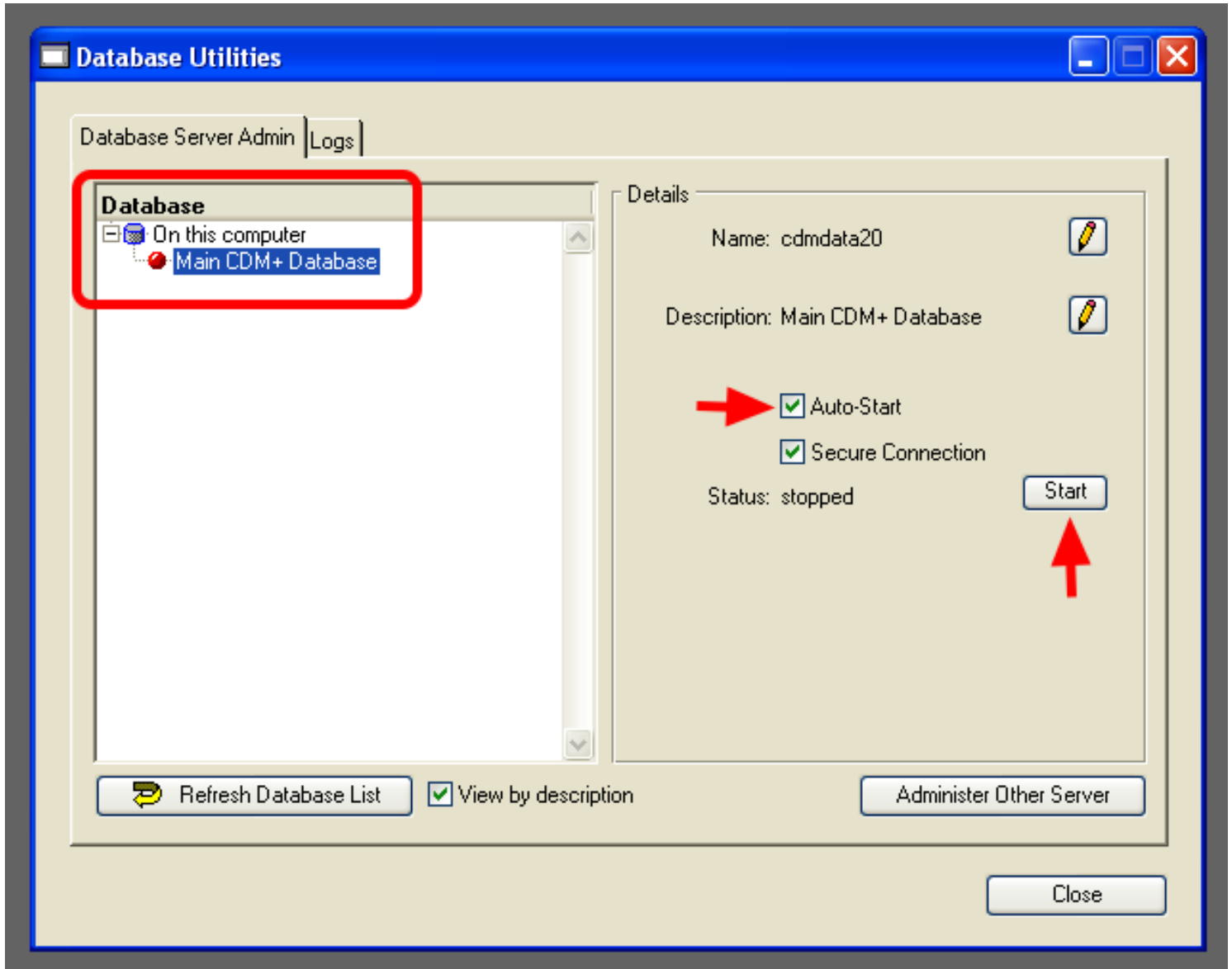
Step 4 - Copy the database bundle



In the database folder, you will see folders that represent your database bundle. In our example, the cdmdata20 database has the complete file name of cdmdata20.db.

You can copy this folder to an external data source such as CD, Flash Drive, External Hard Drive, etc.

Step 5 - Start your database



Bring the CDM+ application up from the Task bar and open Database Utilities window if it is still not open (File menu and select Database Utilities). You will see your database under "On this computer." Highlight your database and on the right side of the window, put a check in the Auto-Start checkbox and click on the Start button.

When the database has restarted the dot beside database name will turn from red to green. Close the Database Utilities window.

Ready to Login



After the update has been applied, the login screen will come up and you will be able to access your data from the new computer.